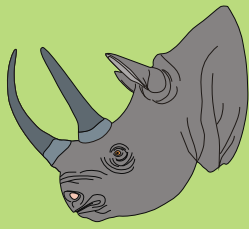
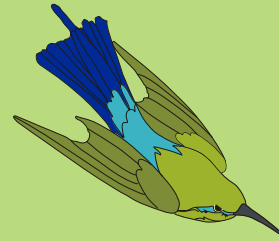


Oxford University Museum of Natural History



Marvellous Mammals and Brilliant Birds!!!



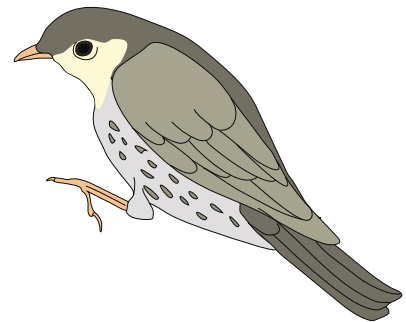
Mammals and birds are two important groups of animals. Can you imagine a world without birds - it would be pretty quiet! And what about mammals - a world without them would mean a world without you! That's right, you are a mammal! Look around the museum to find out more about our amazing animals.

Start in the main court and turn left to find the Passerines case.

1. Passerine Birds

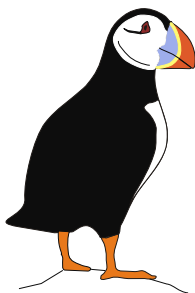
Song Thrushes can break open _____ shells by cracking them against stones.

The Amazonian Umbrella Bird lives in forests in South A _____ and feeds on _____ and _____.



The Song Thrush

2. Non-passerine Birds



The Puffin is a non-passerine bird

Some birds produce nests which people can eat! Edible nests are made from _____ which solidifies.

Which bird in this case is the National Bird of Belize? The _____.

Marvellous Mammals and Brilliant Birds!!! Page 2

3. Australian Mammals

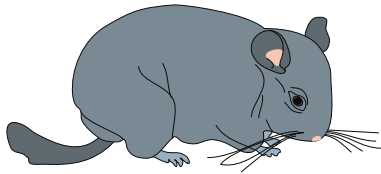
Koalas are plant eaters who live on E_____ and sleep up to _____ hours a day.

Tasmanian Devils are nocturnal, which means that they hunt and feed during the _____.



The Koala

4. South American Mammals



The Chinchilla

Chinchillas live in the A_____ of Chile and eat mainly _____ and seeds.

Which animal in this case lives mainly on ants and termites? (Clue - it has a very long nose).

The _____.

5. African Mammals

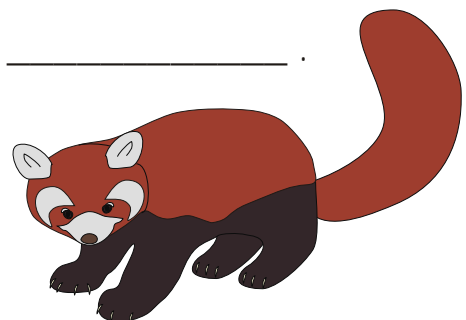
Meerkats live in large colonies of up to _____ individuals .

You can see a Spotted Hyaena in the case. True or false _____.

6. Mammals of Laurasia

Laurasia was a large continent formed by Europe, Asia, and North America. Which small bear lives in mountain forest habitats and needs to be a fiery red colour for camouflage? The _____ .

The Woodchuck is a large rodent which hibernates in the winter. To survive the cold it relies on its _____ .



Congratulations you have finished - you are a marvellous mammal!!!