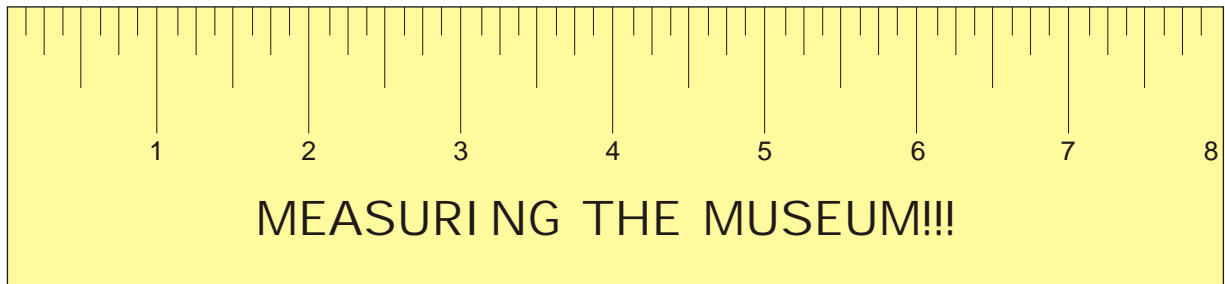


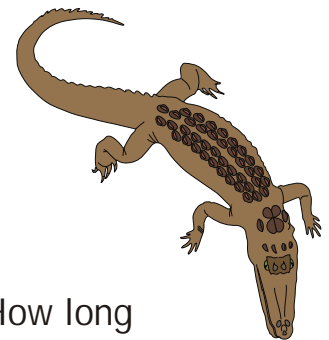
Oxford University Museum of Natural History



The museum is full of objects of all sizes - big and small. Scientists often find out a lot about an animal or fossil just by measuring it. See if you can find your way around the museum, measuring things as you go.

Remember you should bring a tape measure with you on your visit.
Have fun.....

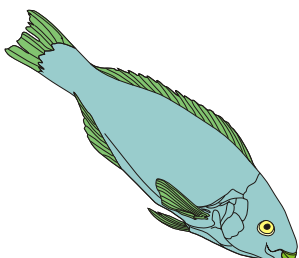
1. Start downstairs in the main court. Can you see a large glass case on the floor? How long is the big crocodile's head? _____ cm



2. Find the flamingo in the Alice in Wonderland case. How long are the flamingo's legs? They are _____ cm long.

3. Measure the feet of the T. rex. How big are they? _____ cm
How big are your feet? _____ cm

4. Find the elephant skeletons. Measure the toes of the baby elephant and the toes of the adult. Baby _____ cm. Adult _____ cm. Which has bigger toes? _____

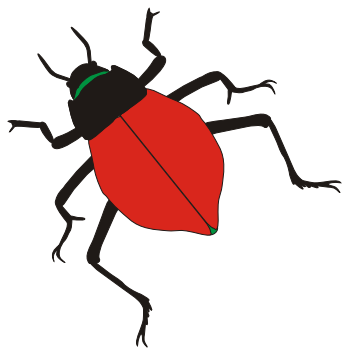
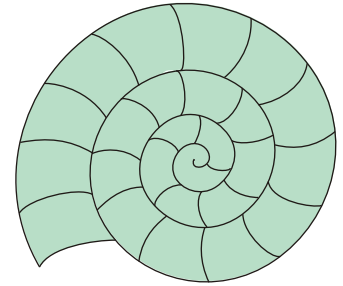


5. There should be lots of other skeletons nearby. How long is the skeleton of the tuna? _____ cm

MEASURING THE MUSEUM!!! Page 2

6. At the back wall of the main court you will find ammonite fossils on the wall that you can touch.

How wide is the lowest one? _____ cm



7. Go upstairs to the insects - find the beetle section. Measure the biggest and smallest beetles you can find.

Biggest _____ cm. Smallest _____ cm

8. You're nearly finished - just one more measurement. How tall are - YOU??

I am _____ cm tall!!!

CONGRATULATIONS!!!

You have finished measuring the museum.

Next time you look around the museum, remember to think about the size of the animals around you - it can often tell you a lot about the way they lived.